

ADA ITEMS

BENCHES

BIKE RACKS

CAMPFIRE RINGS

LANTERN POSTS

LIVE BEAR TRAPS

PEDESTAL GRILLS

PICNIC TABLES

**WILDLIFE PROOF
FOOD LOCKERS
TRASH CANS**

OUTDOOR PRODUCTS



Virginia
Correctional
Enterprises



www.GoVCE.net (800) 823-2823

About Us

Virginia Correctional Enterprises is a self-supporting agency established by the Virginia General Assembly over 85 years ago to employ and train inmates in the Virginia Department of Corrections. VCE's job-training programs help Virginia to post among the lowest reincarceration rates in the country.

VCE products are constructed with pride and established industry certifications and standards, while generating the hard and soft skills for our inmate staff to reenter into society and gain meaningful employment.

VCE job training programs are voluntary and inmates apply and interview to be accepted. The job skills and experience gained from VCE programs provides inmates a greater chance of finding a job after release.

Preparing for a Successful Reentry

Virginia Correctional Enterprises provides work experience that mirrors private-sector business environments.

Soft Skills

On-the-job training and workshops teach inmates how to excel at communication, teamwork, time management, accountability, lean practices and responsibility.

Technical Skills

Inmates learn specialized skills for modern industries, from equipment operations to AutoCAD to maintenance solutions.

Apprenticeships & Industry/Vendor Certifications

The job skills and experience gained from VCE programs enable inmates a greater chance of finding a job after release. These opportunities include registered apprenticeship programs, such as Warehouse Logistics and Materials Handler, and industry/vendor certification programs, such as the Sherwin Williams Protective Coating Applicator Program.

OUTDOOR GRILLS

We manufacture two sizes of outdoor pedestal grills and they are both offered in a surface mounted or an embedded mounted pedestal configuration. They are manufactured from heavy-duty materials and professionally finished with a high temperature paint that gives our products long lasting protection from the fire's heat as well as the outdoor elements. The cooking surfaces are finished with a cooking oil application.

DOUBLE PEDESTAL GRILL

Grill box= 32.5"W x 12"H x 34"D

Overall height= 45" from the ground to top of the box Cooking surface= over 750 square inches

Pedestal post= 6" diameter post

The grill box is made from 7-gauge steel and features a theft-proof swivel base and small holes in the bottom to drain water from the grill box when not in use.

The dual cooking grates can be easily adjusted to any level height (within an 8" range) using handles that sit outside of the grill box. The dual grates ride along a pair of uniquely designed 3/4" diameter "P-shaped" rods that are welded to the inside of the grill box. Each grate can be moved beyond level along these rods so that the grill box can be cleaned or refilled with charcoal.



Mounting	Order #
<i>Surface</i>	8287 04 OPED
<i>Embedded</i>	8287 04 0000

OUTDOOR GRILLS

We manufacture two sizes of outdoor pedestal grills and they are both offered in a surface mounted or an embedded mounted pedestal configuration. They are manufactured from heavy-duty materials and professionally finished with a high temperature paint that gives our products long lasting protection from the fire's heat as well as the outdoor elements. The cooking surfaces are finished with a cooking oil application.

SINGLE PEDESTAL GRILL

Grill box= 22"W x 12"H x 15"D

Overall height= 48" from the ground to top of the box Cooking surface= over 300 square inches

Pedestal post= 3.5" diameter post

The cooking grate can be easily adjusted to four different heights using handles that sit outside of the grill box.

The grill box is made from 7-gauge steel and features a hot coal lip on the front and small holes in the bottom to drain water from the grill box when not in use. Grill boxes also feature a theft-proof swivel base.



Mounting	Order #
<i>Surface</i>	8286 04 OPED
<i>Embedded</i>	8286 04 0000

CAMPFIRE RINGS

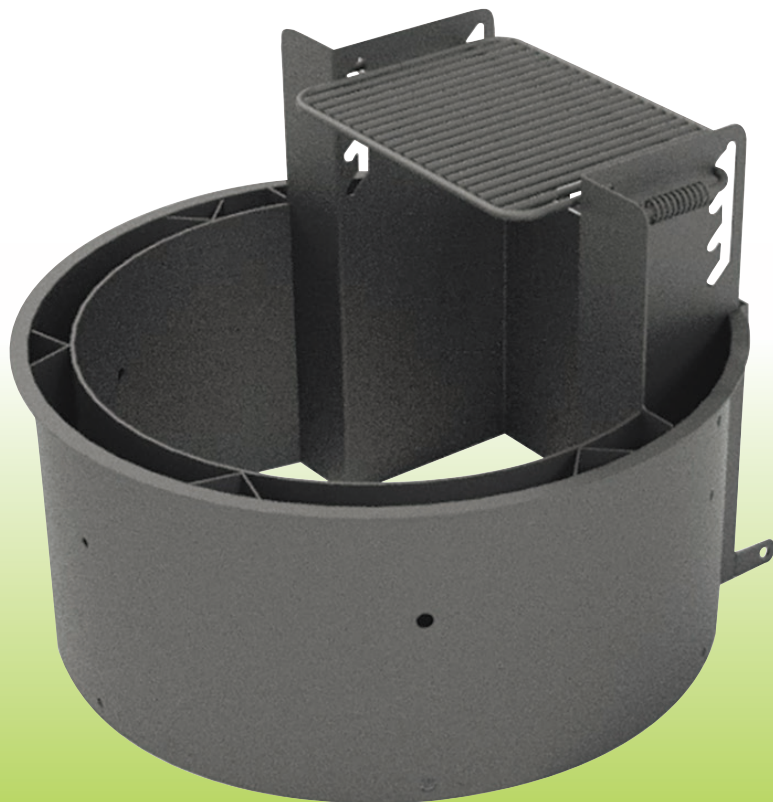
We manufacture two versions of our campfire rings, a standard 32" diameter unit and a 37.5" diameter ADA unit. Both include vertically adjustable cooking grates. They are manufactured from heavy-duty materials and professionally finished with a high temperature paint that gives our products long lasting protection from the fire's heat as well as the outdoor elements. The cooking surfaces are finished with a cooking oil application. Both versions can be anchored into the ground with our custom anchor rods.

ADA 32" CAMPFIRE RING

Inner ring= 32" diameter x 17.313"H Outer ring= 37.5" diameter x 17.313"H Overall height= 28"H
Cooking grate= Approx. 300 square inches of cooking surface.

The cooking grate can be easily adjusted to four different heights using shielded handles that sit outside of the grate box.

Utilizes an inner and outer fire ring for burn safety and ADA compliance.



Order #
8291 04 0000



CAMPFIRE RINGS

We manufacture two versions of our campfire rings, a standard 32" diameter unit and a 37.5" diameter ADA unit. Both include vertically adjustable cooking grates. They are manufactured from heavy-duty materials and professionally finished with a high temperature paint that gives our products long lasting protection from the fire's heat as well as the outdoor elements. The cooking surfaces are finished with a cooking oil application. Both versions can be anchored into the ground with our custom anchor rods.

STANDARD 32" CAMPFIRE RING

Ring= 32" diameter x 9"H

Overall height= 14.25"H

Cooking Grate= Over 200 square inches of cooking surface.

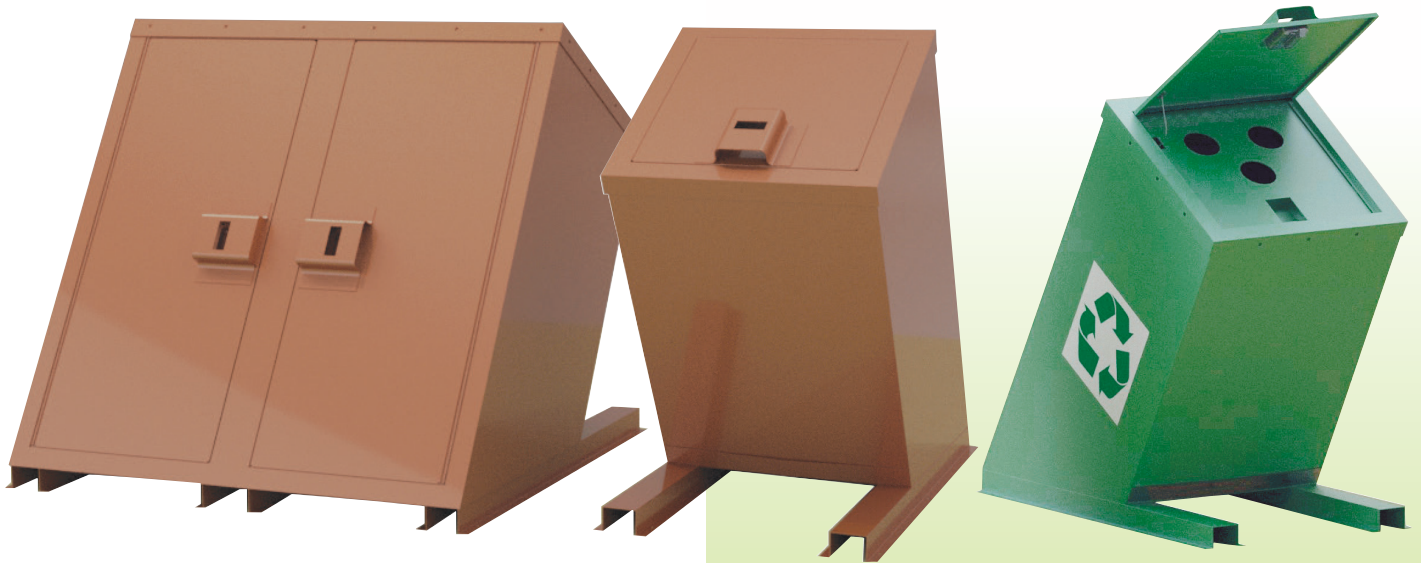
The cooking grill can be easily adjusted to any level height (within a 7.5" range) using shielded handles that are easily accessible. It rides along a pair of uniquely designed 3/4" dia. "P-shaped" rods that are welded to the inside of the fire ring. The cooking grate can be moved beyond level along these rods so that the fire ring can be cleared out, refilled with fresh logs or just moved out of the way altogether.



Order #

8290 04 0000

ANIMAL PROOF TRASH CANS



Animal Proof Trash Receptacle Styles:

Single: 48"H x 24"W x 24"D

(with base: 24"W x 45"D)

Double: 48"H x 49.5"W x 24"D

(with base: 49.5"W x 45"D footprint)

Recycle: 48"H x 24"W x 24"D

(with base: 24"W x 45"D footprint)

Type	BROWN	GREEN
<i>Single</i>	8293 00 0000	8293 00 0001
<i>Double</i>	8293 00 0000 DBLE	–
<i>Recycle</i>	–	8293 00 0REC

Our bear/wildlife-proof trash receptacles are offered in three styles. These trash receptacles are professionally finished with an electro-statically applied, heat sealed epoxy powder coat that gives our products long lasting protection from the outdoor elements.

Key Features:

All styles are ADA compliant.

Has a sleek design that is bear/wildlife-proof and has no protruding edges or wide seams for claws to penetrate and pry open.

Paddle-style latch handles are hidden under uniquely designed latch covers that prevent bears and other wild life from unlatching the receptacle doors.

Each trash receptacle has two doors. A maintenance door for emptying/replacing inside trash bags, and a smaller top door where individuals dispose of their trash and recyclable items.

Each receptacle unit has a lightweight metal bag holder frame bolted to the inside.



PICNIC TABLES & 4-SEAT PICNIC TABLE

BENCH SEAT PICNIC TABLES

Key Features:

Our picnic tables are offered in three styles. The ADA table has extra room on one end that is wheel chair accessible. The ADA frame is designed not to tip/flip over if weight should be applied to the accessible end of the table.

The table frames are galvanized for long lasting protection from the outdoor elements or can be powder coated with a silver color. All of the tubing used on the frames is 2.375" diameter. All other frame components are fabricated from 7 gauge steel for a sturdy and rugged construction.

These tables are designed to accommodate 9.25" x 1.5" boards.



6 ft. Table



8 ft. ADA Table



Size	Galvanized	Pwdr. Coat (Silver)	No Lumber
8 ft.	8292 00 0000	8292 00 0005	—
8 ft. ADA	8292 00 0001	8292 04 0001	8292 00 0004
6 ft.	8292 00 0002	8292 00 0006	8292 00 0003

Picnic Table Sizes:

8 ft. Table: 96" x 64.5" x 29.75"High

8 ft. ADA: 96" x 64.5" x 29.75"High (shown)

6 ft. Table: 72" x 64.5" x 29.75"High

4-SEAT PICNIC TABLE

NEW PRODUCT



Key Features:

Our unique 4-seat picnic table offers seating for smaller intimate groups. This sturdy table and seat combo unit is designed to be bolted down for safety.

The table frame is colored in a silver epoxy powder coating for long lasting protection from the outdoor elements. All of the tubing used on the frame is 2.375" diameter. All other frame components are fabricated from quality gauge steel for sturdy and rugged construction.

The tables are designed to accommodate four 9.25" x 1.5" boards. The seats are designed to accommodate eight 2" x 4" boards. Seat boards have rounded edges for added comfort.

Order #

8292 00 0011

ANIMAL PROOF FOOD STORAGE LOCKERS

Our [BEAR/WILDLIFE-PROOF FOOD STORAGE LOCKERS](#) are offered in three sizes. All three sizes are welded to bases that stand 9" off the ground (15" for ADA models) and can be anchored into an existing concrete pad. These food lockers and bases are professionally finished with an electro-statically applied, heat sealed epoxy powder coat that gives our products long lasting protection from the outdoor elements.



Size	Order #	Interior Space	Dimensions	Std. Height	ADA Height
<i>Small</i>	8293 00 00SM	15.5 cubic ft.	32"W x 26"D	32" overall (9" base)	47" overall (15" base)
<i>Small ADA</i>	8293 00 00SM ADA				
<i>Large</i>	8293 00 00LG	23 cubic ft.	48"W x 26"D		
<i>Large ADA</i>	8293 00 00LG ADA				
<i>X-Large</i>	8293 00 0XLG	35.5 cubic ft.	60"W x 26"D		
<i>X-Large ADA</i>	8293 00 0XLG ADA				

Key Features:

Minimalist design is bear/wildlife-proof and has no protruding edges or wide seams for claws to penetrate and pry open.

All three sizes feature a full-length water shield that helps keep the weather out and the contents of the lockers dry.

Doors and tops are reinforced with stiffeners to keep them from crushing.

Paddle-style latch handles are hidden under uniquely designed latch covers that prevent bears and other wildlife from unlatching the locker doors.

PEDESTAL PARK BENCH



Mounting	4 ft. Bench	6 ft. Bench
Surface	8296 00 4PED	8296 00 6PED
Embedded	8296 00 4PST	8296 00 6PST

Key Features:

Our new pedestal park benches are offered in 48" and 72" sizes. Both sizes are offered as a surface mounted pedestal configuration (*shown above*) or an embedded mounted pedestal configuration. The frames of our pedestal park benches are professionally finished with an electro-statically applied, heat sealed epoxy powder coat that gives our products long lasting protection from the outdoor elements. Both size benches use eight 3" x 4" timbers.

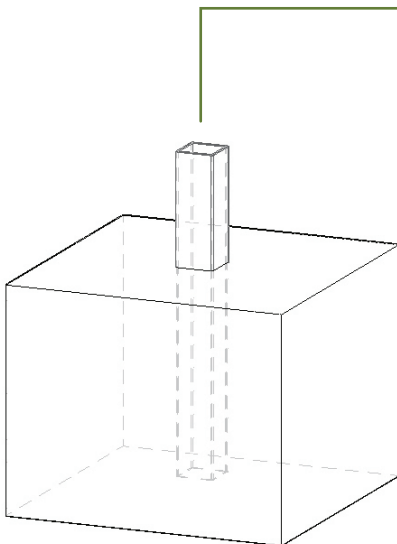
FOOTING INFORMATION

SURFACE MOUNTED PEDESTAL CONFIGURATION

Utilizes a 12" x 3.5" x 3.5" square tubing post and a 10.5" x 10.5" x 0.25" mounting plate. Wedge anchors (0.75" x 4.25") should be used to anchor the bench to the concrete pad. Be sure there is a minimum of 5 anchor diameters spacing from the wedge anchor to the edge of the concrete pad. (This will be 3.75" distance if using a 0.75" diameter anchor).

EMBEDDED PEDESTAL CONFIGURATION

Utilizes a 33.75" x 3.5" x 3.5" square tubing post. The post should be embedded 21.75" below the surface of the concrete leaving 12" exposed above the surface. The concrete pad should be a minimum size of 30" x 30" x 24"D and local codes should be checked before installing. (Some soil conditions may require a larger footing).



LANTERN POSTS & BIKE RACKS

LANTERN POSTS

Tray	Pwdr. Coat (Silver)	Galvanized
With Tray	8292 00 0010	8288 00 0000
W/Out Tray	8292 00 0009	8288 00 0001

Key Features:

Our lantern posts are offered with and without an adjustable tray. Both have 2.375" diameter posts measuring out at 97.5" overall height. These posts include two sturdy lantern hooks and a perpendicular anchor rod 18" from the bottom to aide in mounting the pole into the ground.



BIKE RACKS

10 ft. Shown



Key Features:

Our bike racks are offered in two convenient sizes. The 10 foot rack can park up to 16 bicycles and the 6 foot rack can park up to 10 bicycles.

Size	Pwdr. Coat (Silver)	Galvanized
10 ft.	8289 00 0008	8289 00 0000
6 ft.	8289 00 0007	8289 00 0001

These bike racks are galvanized for long lasting protection on from the outdoor elements. All of the tubing used on the frames is 1.500" diameter. All uprights are .75" diameter steel rods.

CULVERT - LIVE BEAR TRAP

All of our live bear traps are designed and intended to be a humane way of trapping and transporting nuisance animal(s) from unwanted areas. To protect the animal(s) from injury, carriage bolts are installed everywhere the bolt heads are exposed inside the trap. Our line of bear traps are professionally finished with an electro-statically applied, heat sealed epoxy powder coat that gives our products long lasting protection from the outdoor elements.

**Call today for
a free quote.**

TRAP DIMENSIONS

84.5"L x 60"H x 40"W

CULVERT TUBE DIMENSIONS

36" diameter x 83"L or 59"L

**NEW
PRODUCT**

Key Features:

Designed to be loaded into a small truck bed or onto a flat bed trailer. This trap utilizes an aluminum corrugated culvert tube and an aluminum frame made from 1 ¼" x 1 ¼" angle making it lightweight and maneuverable. The trigger and mechanism is fabricated from ¼" steel making it tough and virtually indestructible.

The aluminum trap door can be secured with a spin latch that is mounted to the frame and penetrates one of two slots in the door. The bottom slot can be utilized to help hold the door in the open position while the animal is being removed or the trap needs cleaning. The top slot is utilized for locking the trap door in the closed position. *(Lock is not included.)*

A sliding dart door is conveniently located on the back panel to help safely subdue the animal inside. Multiple vents have been drilled out of the culvert tube and are also laser cut from the back panel for better air flow. Small drain holes have also been drilled out of the bottom of the culvert tube. For animal safety, all bolt heads face inside and all nuts and bolt ends protrude outside the trap.

Two sturdy aluminum slides are mounted to the bottom and run the length of the trap to aid in maneuvering the trap into place.



TRAILED - LIVE BEAR TRAP

All of our live bear traps are designed and intended to be a humane way of trapping and transporting nuisance animal(s) from unwanted areas. To protect the animal(s) from injury, carriage bolts are installed everywhere the bolt heads are exposed inside the trap. Our line of bear traps are professionally finished with an electro-statically applied, heat sealed epoxy powder coat that gives our products long lasting protection from the outdoor elements.



Key Features:

TRAP BOX

98"W x 48"H x 50"D

The trap's box is reinforced by 12-gauge panels and a 2" x 1" steel tubing frame.

Trigger bar cable is hidden inside 0.75" conduit to help reduce accidental triggering. Trap door latches are also hidden by covers to reduce the chance of an accidental triggering.

Eighteen 2" jab holes are mounted into the sides of the trap along with four 6" x 6" access doors (two on each side) to aid in the maneuvering of the trapped animal(s).

Two counterweight arms are to be inserted into the weighted arm sleeves mounted to the trap door when trap is set. These weighted arms can be conveniently stored in the weighted arm sleeves found on either side of the trap box when the trap is not in use. We strongly suggest storing the weighted arms in their storage sleeves when not in use or when the trap is in transit.

TRAILER

2" x 2" x 0.25" angle iron frame. Includes 28" diameter wheels, 1.875" ball coupler, front A-frame jack, rear and side lights, safety chains, and adjustable stabilizer legs. Conduit (0.75") is mounted under the frame to hide/protect the wiring harness.

**Call today for
a free quote.**

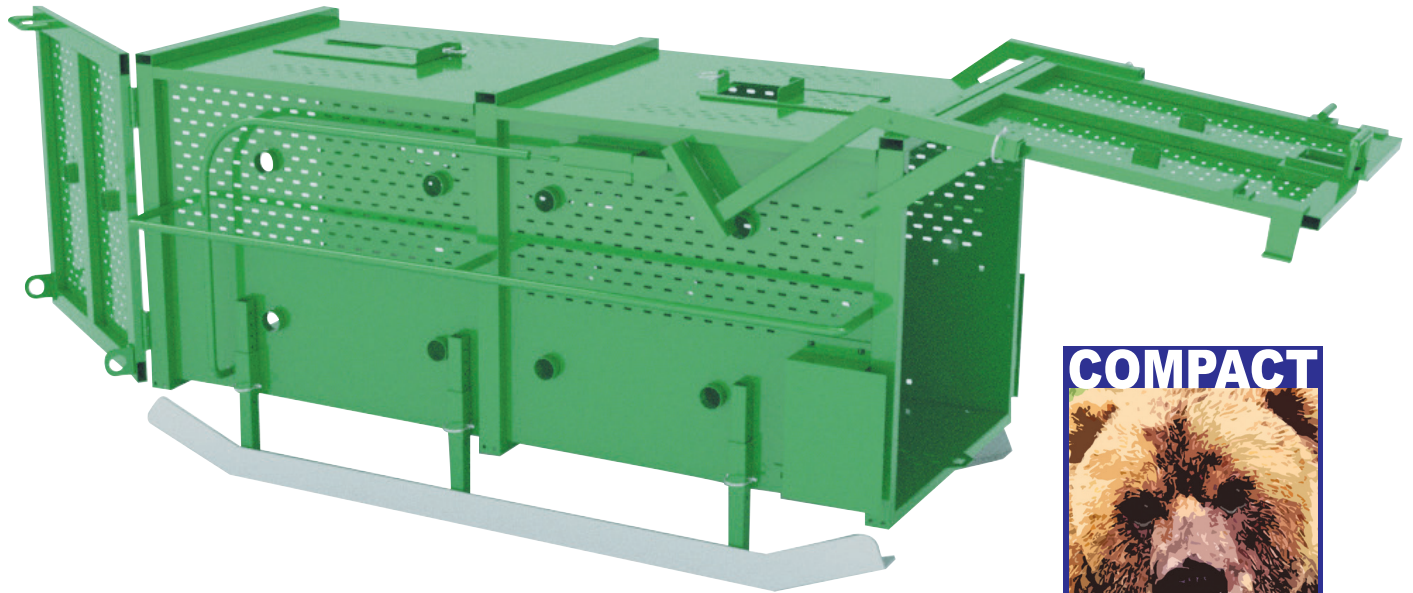
FRONT DOOR

Front door opening is 50"W x 48"H for easy access inside the trap's box. This door swings open left to right and uses a 35" x 1/2" diameter vertical lock rod to secure the door closed. Four 2" job holes are mounted into the door.

TRAP DOOR

Trap door opening is 50"W x 48" and hinged from the top. This door can be set open using the trigger bar and counterweights or can be propped open securely with a built-in safety bar that allows for easy access to the inside of the trap. Once triggered, the trap door will swing down and latch closed. Our design features a single center paddle latch that acts as an anti-bounce measure to keep the door shut as two 0.25" thick steel latches swing into place safely securing the door into its closed position. To add another level of security, two small lock plates are supplied to fit onto the trap door's latching mechanism for a pad lock to be applied. (Padlock(s) not included). Four 2" job holes are mounted into the door.

COMPACT - LIVE BEAR TRAP



Key Features:

TRAP BOX

72"W x 30"H x 28"D

Designed to be loaded into a small truck bed or onto a flat-bed trailer. The trap's box is reinforced by 14-gauge panels and a 2" x 1" steel tubing frame.

Trigger bar cable is hidden inside 0.75" conduit to help reduce accidental triggering. Trap door latches are also hidden by covers to reduce the chance of an accidental triggering.

Hefty 0.50" lift rods run the length of the trap to help lift and maneuver the trap into place.

Two sturdy 2" stainless steel slides are mounted to the bottom and run the length of the trap to aid the trap in sliding up a tailgate ramp.

Sixteen 2" jab holes are mounted into the sides to aid in the maneuvering of the trapped animal. Two sliding dart doors are mounted in the roof.

Two counterweight arms are to be inserted into the weighted arm sleeves mounted to the trap door when trap is set. These weighted arms can be conveniently stored in the weighted arm sleeves found on the side of the trap box when the trap is not in use. We strongly suggest storing the weighted arms in their storage sleeves when not in use or when the trap is in transit.

**Call today for
a free quote.**



FRONT DOOR

Front door opening is 26"W x 28"H (728 square inches) for easy access inside the trap's box. This door swings open left to right for easy access and uses a 25" x 0.50" diameter vertical lock rod to secure the door closed. Two 7-gauge winch brackets are welded to the lower frame of the door so a winch can be attached and trap can be pulled up a tailgate ramp. Two 2" jab holes are mounted in this door.

TRAP DOOR

Trap door opening is 26"W x 28"H and hinged from the top. This door can be set open using the trigger bar and counterweights or can be propped open securely with the built-in safety bar that allows for easy access to the inside of the trap. Once triggered, the trap door will swing down and latch closed. Our design features a single center paddle latch that acts as an anti-bounce measure to keep the door shut as two 0.25" thick steel latches swing into place safely securing the door into its closed position. To add another level of security, two small lock plates are supplied to fit onto the trap door's latching mechanism for a pad lock to be applied. (Padlock(s) not included). Two 2" jab holes are mounted in this door.

Customer Service

1-800-823-2823

vcecustsrv@vadic.virginia.gov



VIRGINIA
CORRECTIONAL
ENTERPRISES

Customer Contacts

Furniture

Steven Bennett - Eastern Region
Furniture/Case Goods Sales Only

- 804-338-0080
- Steven.Bennett@vadic.virginia.gov

Julia Batta - Northern Region
Furniture/Case Goods Sales Only

- 804-510-3721
- Julia.Batta@vadic.virginia.gov

June Duvall - Central Region
Furniture/Case Goods Sales Only

- 804-759-8421
- June.Duvall@vadic.virginia.gov

Contact Sales Manager - Robert Tilkey
Western Region Furniture/Case Goods
Sales Only

- 804-241-8570
- Robert.Tilkey@vadic.virginia.gov

Robert Tilkey - Sales Manager

- 804-241-8570
- Robert.Tilkey@vadic.virginia.gov

Barbara Miner - Design Manager

- 804-887-3994
- Barbara.Miner@vadic.virginia.gov

Creating Quality Products and Promising Futures

Other Services

Ruth Pollard - Offset & Digital Print

- 804-385-3548
- Ruth.Pollard@vadic.virginia.gov

Vehicle Conversions/Drug Testing Kits/
Janitorial Supplies/Signs & Banners

- vcespecialtysales@vadic.virginia.gov

Ink & Toner

- vcecustsrv@vadic.virginia.gov

John "Josh" Petrie - Apparel/Silk Screen &
Embroidery

- 804-743-4129
- John.Petrie@vadic.virginia.gov



VIRGINIA
CORRECTIONAL ENTERPRISES



Virginia
Correctional
Enterprises



www.GoVCE.net
8030 White Bark Terrace | North Chesterfield, VA 23237
Customer Service
(800) 823-2823
vcecustsvc@vadoc.virginia.gov

Printed by Virginia Correctional Enterprises Digital Print Facility