



MONTGOMERY

FURNITURE COLLECTION



Virginia
Correctional
Enterprises



www.GoVCE.net (800) 823-2823

Workforce Development

About Us

Virginia Correctional Enterprises (VCE) is a self-supporting agency designed to provide incarcerated individuals with job training, skills development, and employment opportunities within the Virginia Department of Corrections. Established over 85 years ago by the Virginia General Assembly, VCE focuses on reducing recidivism by equipping inmates with the tools they need to reintegrate into society successfully.

VCE's mission is to strengthen future employment opportunities and marketable skills for inmate workers through on-the-job training and work development programs, supported by the production and delivery of quality products and services to our customers. VCE workforce development programs are voluntary, inmate workers apply, interview and are accepted into a program based on a predetermined set of criteria for each program.

Preparing for a Successful Reentry

Soft Skills Development

Inmates are trained in critical interpersonal and professional skills such as communication, teamwork, time management, accountability, and the principles of lean practices. These are essential for their future success in the workplace, allowing them to adapt and thrive in a variety of professional environments.

Specialized Skill Training

The program offers hands-on training in industries such as furniture design and manufacturing, AutoCAD, and maintenance and sanitation solutions. This training helps prepare inmates for roles that require technical expertise, making them more competitive candidates when seeking employment after release.

Registered Apprenticeships & Certifications

Through partnerships with industry professionals, VCE offers Registered Apprenticeships and vendor certifications. These provide inmates with recognized credentials that enhance their employability and make them more attractive to potential employers in the private sector.

Workforce Development Programs

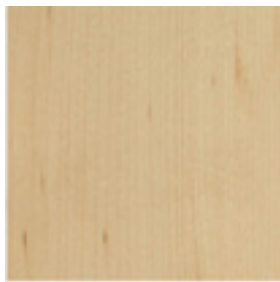
The overarching goal of VCE's workforce development programs is to equip inmates with the practical skills and knowledge necessary to secure meaningful employment after their release.

Montgomery Collection

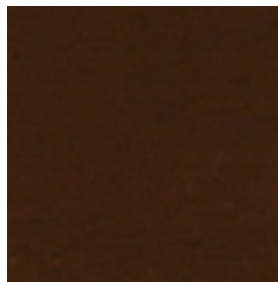
The VCE Montgomery furniture line features contemporary modular case goods crafted from maple wood. Designed for the modern office utilizing the work wall concept. It offers 84-inch-high overheads along with generous storage and workspace.

All hardware is finished in silver, with locks matched to the hardware. Grommets are available in gray or black.

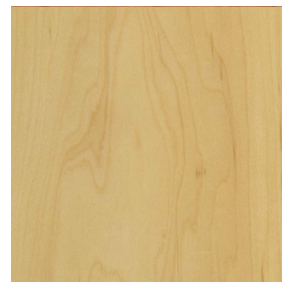
Available Stains



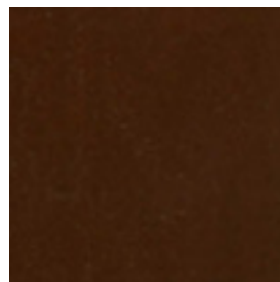
Natural Maple
M00



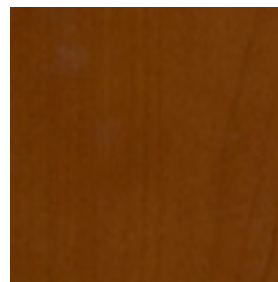
Walnut
M01



Golden Oak on Maple
M30



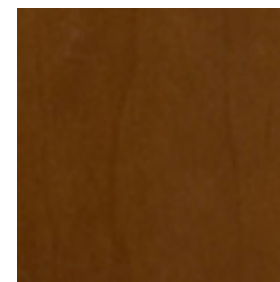
Mahogany
M48



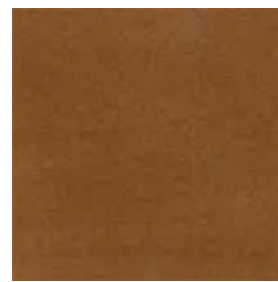
Medium Brown Cherry
M51



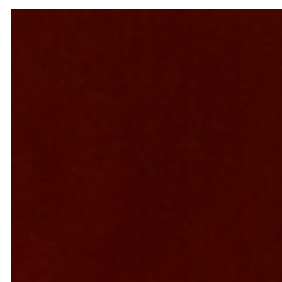
Cherry
M55



Victorian Cherry
M57



Medium Dark Cherry
M59



Medium Red Cherry
M70

Additional products and fabrics are available - please contact your VCE sales/design representative for a personalized quote.

Desks



Desk

| | |
|-----------|-----------------------|
| MNTG-3108 | 30" D x 60" W x 30" H |
| MNTG-3007 | 30" D x 66" W x 30" H |
| MNTG-3008 | 30" D x 72" W x 30" H |
| MNTG-3016 | 36" D x 72" W x 30" H |



Desk, Bow Front, Full Modesty

| | |
|-----------|--------------------------|
| MNTG-3095 | 30/36" D x 72" W x 30" H |
|-----------|--------------------------|



Desk, "b" Top, Full Modesty

| | |
|-----------|--------------------------|
| MNTG-3131 | 30/42" D x 60" W x 30" H |
| MNTG-3132 | 30/42" D x 66" W x 30" H |
| MNTG-3133 | 30/42" D x 72" W x 30" H |



Desk, "d" Top, Full Modesty

| | |
|-----------|--------------------------|
| MNTG-3134 | 30/42" D x 60" W x 30" H |
| MNTG-3135 | 30/42" D x 66" W x 30" H |
| MNTG-3136 | 30/42" D x 72" W x 30" H |

Desks & Credenzas



Desk, Side Mount, Pen Top

MNTG-3037

30" D x 66" W x 30" H



Desk, Peninsula Top, Full Modesty, Right

MNTG-3122

30" D x 60" W x 30" H

MNTG-3123

30" D x 66" W x 30" H

MNTG-3027

30" D x 72" W x 30" H



Desk, Peninsula Top, Full Modesty, Left

MNTG-3124

30" D x 60" W x 30" H

MNTG-3125

30" D x 66" W x 30" H

MNTG-3029

30" D x 72" W x 30" H



Credenza, 18" Modesty Panel

MNTG-3109

24" D x 60" W x 30" H

MNTG-3110

24" D x 66" W x 30" H

MNTG-3003

24" D x 72" W x 30" H



Credenza, Fullbank, 4 Doors

MNTG-3114

24" D x 60" W x 30" H

MNTG-3115

24" D x 66" W x 30" H

MNTG-3052

24" D x 72" W x 30" H

Credenzas, Returns & Bridges



Credenza, Buffet Height, 4 Door, 4 Drawer

| | |
|-----------|-----------------------|
| MNTG-3116 | 24" D x 60" W x 36" H |
| MNTG-3117 | 24" D x 66" W x 36" H |
| MNTG-3118 | 24" D x 72" W x 36" H |



Return, 18" Privacy Panel, Right

| | |
|-----------|-----------------------|
| MNTG-3138 | 24" D x 42" W x 30" H |
| MNTG-3011 | 24" D x 48" W x 30" H |



Return, 18" Privacy Panel, Left

| | |
|-----------|-----------------------|
| MNTG-3137 | 24" D x 42" W x 30" H |
| MNTG-3120 | 24" D x 48" W x 30" H |



Bridge

| | |
|-----------|-----------------------|
| MNTG-3058 | 24" D x 42" W x 30" H |
| MNTG-3044 | 24" D x 48" W x 30" H |

Hutches, Pedestals & Storage



Hutch, 72" 4 Door, 78" 6 Door w/Task Lights

MNTG-3013

14" D x 72" W x 55" H



Pedestal, Freestanding, under worksurface, movable, BBF

MNTG-3017

20" D x 16" W x 28" H

MNTG-3005

25" D x 16" W x 28" H



Pedestal, Freestanding, under worksurface, movable, FF

MNTG-3006

20" D x 16" W x 28" H

MNTG-3015

25" D x 16" W x 28" H



Storage

MNTG-3043

35" D x 24" W x 84" H

Lateral Files & Bookcases



Lateral File, 2 Drawer

MNTG-3020

24" D x 30" W x 29" H

MNTG-3002

24" D x 36" W x 29" H



Lateral File, 4 Drawer

MNTG-3121

24" D x 30" W x 54" H

MNTG-3004

24" D x 36" W x 54" H



Bookcase

MNTG-3018 (1 SHELF)

16" D x 36" W x 29" H

MNTG-3009 (5 SHELF)

16" D x 36" W x 84" H



Combo Cabinet

| | |
|-----------|-----------------------|
| MNTG-3023 | 24" D x 24" W x 84" H |
| MNTG-3021 | 24" D x 30" W x 84" H |
| MNTG-3001 | 24" D x 36" W x 84" H |



TABLE, 18" DRUM BASE

| | |
|-----------|-----------------|
| MNTG-3092 | 42" DIA x 30" H |
| MNTG-3093 | 48" DIA x 30" H |



Table

| | |
|--------------------|-----------------------|
| MNTG-3051 (END) | 22" D x 22" W x 22" H |
| MNTG-3057 (COFFEE) | 20" D x 42" W x 16" H |



Montgomery Furniture Collection Specifications

Worksurfaces

- Worksurfaces are 1-1/8" finished maple wood veneer over engineered wood substrate.
- Reveal wood edge on all sides.

Side Panels / Back Panels

- Panels are 3/4" finished on both sides with maple wood veneer over substrate.

Pedestals and Drawers

- Drawer fronts are 3/4" thick maple wood veneer over Substrate.
- Drawer fronts have maple wood edge banding on all sides.
- Interior drawer dove tail construction from birch plywood.
- Pedestal drawers open with silver bar pull, located on center.
- Lateral file drawers, open with two front silver bar pulls.
- Box drawers, File drawers, and Lateral file drawers are five sided with ball bearing glides.
- Pedestal file drawers are standard with file support rails, accepting letter hanging files, allowing front to back filing.
- Lateral file drawers are standard with file support rails, accepting letter or legal hanging files, allowing front to back or side to side filing.
- Drawers are full extension ball bearing slides.
- Lateral file drawers have interlocking safety system allowing only one drawer to be opened at a time, standard on all models.
- Box drawers and file drawers are 20" (500mm) deep.
- The floor levelers are adjustable allowing 1" height adjustment.

Lock Specifications

- Locks are available in silver finish.
- Lock core can be changed allowing multiple units to be keyed alike.
- One lock is standard on Box/Box/File pedestals, File/File pedestals, and Lateral files.

Finishes / Color Specifications

- Unit color may be ordered in any of the nine finishes (5 standard, 4 optional).

Hutch and Cabinet Doors

- Are available in all finishes with locks.

Hardware Colors

- Pulls are available with silver bar pull.
- Metal pedestal legs on desks are available in silver or black.
- Locks available in silver.

Grommets

- Grommets have a diameter of 2-3/8". Available in gray only.



VIRGINIA
CORRECTIONAL
ENTERPRISES

Creating Quality Products and Promising Futures

Customer Contacts

Eastern Region Sales Furniture/Case

Goods Sales Only - Steven Bennett

- 804-338-0080
- Steven.Bennett@vadoc.virginia.gov

Northern Region Sales Furniture/Case

Goods Only - Julia Batta

- (804) 510-3721
- Julia.Batta@vadoc.virginia.gov

Central Region Sales Furniture/Case Goods

Sales Only - June Duvall

- 804-759-8421
- June.Duvall@vadoc.virginia.gov

Western Region Sales Furniture/Case

Goods Sales Only

Contact Sales Manager - Robert Tilkey

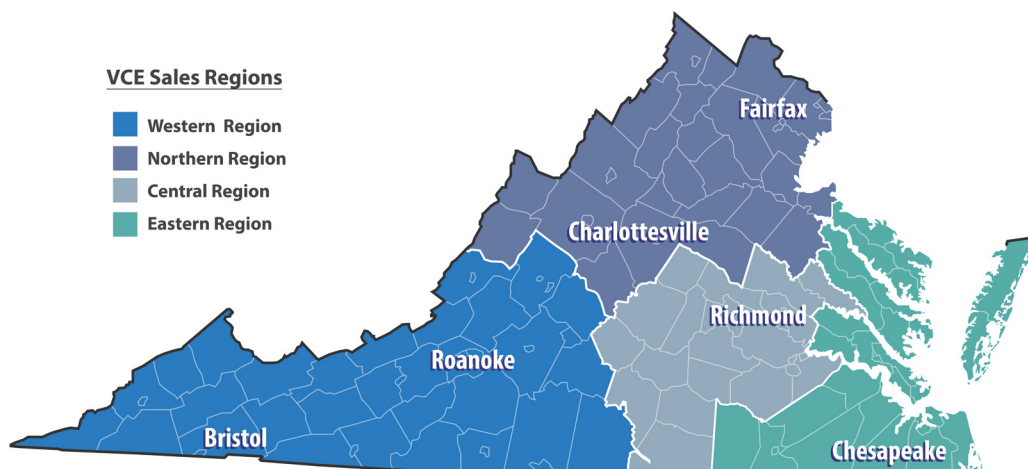
- 804-241-8570
- Robert.Tilkey@vadoc.virginia.gov

Sales Manager - Robert Tilkey

- 804-241-8570
- Robert.Tilkey@vadoc.virginia.gov

Design Manager - Barbara Miner

- 804-840-5029
- Barbara.Miner@vadoc.virginia.gov



Customer Service

1-800-823-2823

vcecustsvc@vadoc.virginia.gov



Virginia
Correctional
Enterprises



8030 White Bark Terrace | North Chesterfield, VA 23237
Customer Service
(800) 823-2823
vcecustsrvc@vadoc.virginia.gov

Printed by Virginia Correctional Enterprises Digital Print Facility