



COMMONWEALTH

FURNITURE COLLECTION



Virginia
Correctional
Enterprises



www.GoVCE.net (800) 823-2823

About Us

Virginia Correctional Enterprises (VCE) is a self-supporting agency designed to provide incarcerated individuals with job training, skills development, and employment opportunities within the Virginia Department of Corrections. Established over 85 years ago by the Virginia General Assembly, VCE focuses on reducing recidivism by equipping inmates with the tools they need to reintegrate into society successfully.

VCE's mission is to strengthen future employment opportunities and marketable skills for inmate workers through on-the-job training and work development programs, supported by the production and delivery of quality products and services to our customers. VCE workforce development programs are voluntary, inmate workers apply, interview and are accepted into a program based on a predetermined set of criteria for each program.

Preparing for a Successful Reentry

Soft Skills Development

Inmates are trained in critical interpersonal and professional skills such as communication, teamwork, time management, accountability, and the principles of lean practices. These are essential for their future success in the workplace, allowing them to adapt and thrive in a variety of professional environments.

Specialized Skill Training

The program offers hands-on training in industries such as furniture design and manufacturing, AutoCAD, and maintenance and sanitation solutions. This training helps prepare inmates for roles that require technical expertise, making them more competitive candidates when seeking employment after release.

Registered Apprenticeships & Certifications

Through partnerships with industry professionals, VCE offers Registered Apprenticeships and vendor certifications. These provide inmates with recognized credentials that enhance their employability and make them more attractive to potential employers in the private sector.

Workforce Development Programs

The overarching goal of VCE's workforce development programs is to equip inmates with the practical skills and knowledge necessary to secure meaningful employment after their release.



Double Pedestal Desk

30" wide x 60" long x 30" high	#3316
30" wide x 66" long x 30" high	#3299
30" wide x 72" long x 30" high	#32990



Single Desk, Right Pedestal

30" wide x 60" long x 30" high	#33008
30" wide x 66" long x 30" high	#3320
30" wide x 72" long x 30" high	#3277



Single Desk, Left Pedestal

30" wide x 60" long x 30" high	#33030
30" wide x 66" long x 30" high	#3319
30" wide x 72" long x 30" high	#33028



Double Pedestal Bow Front Desk

36" wide x 72" long x 30" high	#33082
--------------------------------	--------

Desks, Hutches & Bridges



Single Bow Front Desk, Right Pedestal

36" wide x 72" long x 30" high

#33192



Single Bow Front Desk, Left Pedestal

36" wide x 72" long x 30" high

#33191



Hutch w/4 Solid Doors

16" deep x 60" wide x 42" high

#33047

**currently not available in the walnut stain*

16" deep x 66" wide x 42" high

#33048

**currently not available in the walnut stain*

16" deep x 72" wide x 42" high

#33000

16" deep x 78" wide x 42" high

#33038

**currently not available in the walnut stain*



Bridge

24" wide x 42" long x 30" high

#3266

24" wide x 48" long x 30" high

#3302



Right Return, No Pedestal

20" wide x 48" long x 30" high	#33122
24" wide x 42" long x 30" high	#33145
24" wide x 48" long x 30" high	#33121



Left Return, No Pedestal

20" wide x 48" long x 30" high	#33144
24" wide x 42" long x 30" high	#33146
24" wide x 48" long x 30" high	#33166



Right Pedestal Return, File File

24" wide x 48" long x 30" high	#33167
24" wide x 60" long x 30" high	#33124



Left Pedestal Return, File File

24" wide x 48" long x 30" high	#33168
24" wide x 60" long x 30" high	#33149



Right Return, Box Box File

20" wide x 48" long x 30" high	#3321
24" wide x 42" long x 30" high	#3344
24" wide x 48" long x 30" high	#3307



Left Return, Box Box File

20" wide x 48" long x 30" high	#3322
24" wide x 42" long x 30" high	#3342
24" wide x 48" long x 30" high	#3308

Credenzas



Credenza, Single Combination Right Pedestal

24" wide x 72" long x 30" high

#33064



Credenza, Single Combination Left Pedestal

24" wide x 72" long x 30" high

#33283



Credenza, Single Right Pedestal

24" wide x 60" long x 30" high

#33235

24" wide x 66" long x 30" high

#3329

24" wide x 72" long x 30" high

#3301



Credenza, Single Left Pedestal

24" wide x 60" long x 30" high

#33280

24" wide x 66" long x 30" high

#3328

24" wide x 72" long x 30" high

#3305



Credenza, Double 4 Drawer Lateral File

24" wide x 72" long x 30" high

#33092



Credenza, Single Lateral File Right Pedestal

24" wide x 60" long x 30" high	#33281
24" wide x 66" long x 30" high	#33282
24" wide x 72" long x 30" high	#33076



Credenza, Single Lateral File Left Pedestal

24" wide x 60" long x 30" high	#33284
24" wide x 66" long x 30" high	#33136
24" wide x 72" long x 30" high	#32100



Credenza, Double Pedestal

24" wide x 60" long x 30" high	#3317
24" wide x 66" long x 30" high	#3296
24" wide x 72" long x 30" high	#3310



Credenza, Full Bank Box Box File

24" wide x 60" long x 30" high	#33710
24" wide x 66" long x 30" high	#33010
24" wide x 72" long x 30" high	#3314



Credenza, Full Bank File File

24" wide x 60" long x 30" high	#33711
24" wide x 66" long x 30" high	#33712



Credenza, Full Bank 4 Door

24" wide x 60" long x 30" high	#33713
24" wide x 66" long x 30" high	#33714
24" wide x 72" long x 30" high	#33291

Lateral Files & Bookcases

Lateral File, 2 Drawer

24" deep x 32" wide

#3297

24" deep x 36" wide

#3309

Lateral File, 4 Drawer

24" deep x 30" wide

#33159

**currently not available in the walnut stain*

24" deep x 36" wide

#3313

Lateral File, 5 Drawer

24" deep x 30" wide

#33160

24" deep x 36" wide

#3315

Bookcase

15" deep x 36" wide x 48" high

#33085

**currently not available in the walnut stain*

15" deep x 36" wide x 72" high

#33087

16" deep x 30" wide x 48" high

#3293

16" deep x 30" wide x 72" high

#3312

**currently not available in the walnut stain*

Bookcase w/Doors

15" deep x 36" wide x 72" high

#33158

16" deep x 30" wide x 72" high

#3311

Commonwealth Furniture Collection Tables & Stains

The Commonwealth Collection reflects VCE's commitment to exceptional wood furnishings crafted with quality and value in mind. Made from premium Cherry hardwood veneers and hand-finished, it features timeless designs that honor Virginia's rich heritage.

Each piece is designed to meet the needs of modern executive offices while maintaining a sophisticated look. Highlights include writing tablets, antique brass hardware, pigeonhole shelving, and a hidden knee-hole shelf for discreet storage.



Round Conference Table

36" Dia. 15 1/4" wide x 31" long x 30" high #3289

42" Dia. 15 1/4" wide x 31" long x 30" high #3290



Conference Table/Drumbase

36" wide x 72" long #3298

48" wide x 120" long #3286

48" wide x 144" long #3287



Tables

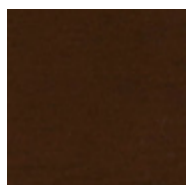
22" deep x 22" wide x 22" high (End) #3326

20" deep x 42" wide x 16" high (Coffee) #3327

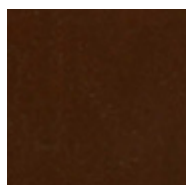
20" deep x 42" wide x 29 3/4" high (Console/Computer) #3325



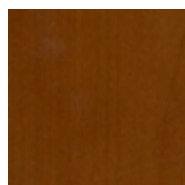
Color Options



Walnut
C01



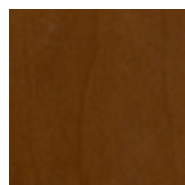
Mahogany
C48



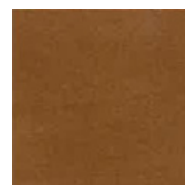
Medium Brown
Cherry
C51



Cherry
C55



Victorian
Cherry
C57



Dark Cherry
C59



Medium Red
Cherry
C70

Commonwealth Furniture Collection Specifications

Worksurfaces

- Worksurfaces are 1-1/8" finished cherry wood veneer over engineered wood substrate.
- Signature design sculpted profile on top edges.

Side Panels / Back Panels

- Panels are 3/4" finished on both sides with cherry wood veneer over substrate that adheres to all ANSI/HPVA HP-1-2009 standards ©.
- Hardwood picture frame style cherry trim with bead molding.

Lock Specifications

- Locks are available in black finish.
- Lock cores can be ordered allowing for multiple units to be keyed alike.
- One lock is standard on Box/Box/File pedestals File/File pedestals, and Lateral files.

Finishes / Color Specifications

- Unit color may be ordered in any of the seven finishes.

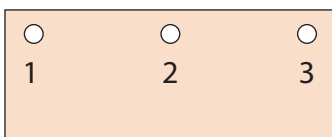
Hutch and Cabinet Doors

- Are available in all finishes with locks and pulls.

Grommets

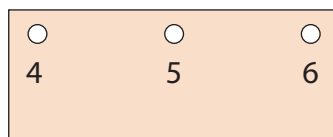
- Grommets have a diameter of 1 3/4". Available in black only.

Top



- 1-Top Left (TL)
2-Top Center (TC)
3-Top Right (TR)

Privacy Panel



- 4-Privacy Panel Left (PL)
5-Privacy Panel Center (PC)
6-Privacy Panel Right (PR)

Pedestals and Drawers

- Drawer fronts are 3/4" thick cherry wood veneer over substrate.
- Drawer fronts have cherry wood edge banding on all sides.
- Interior drawer with dove tail construction from birch plywood for added strength and durability.
- Pedestal drawers are equipped with antique bronze bar pulls, located in the center of the drawers.
- Lateral file drawers, are equipped with two front black nickel bar pulls.
- Box drawers, File drawers, and Lateral file drawers are five sided with ball bearing glides.
- Pedestal file drawers are standard with file support rails, accepting letter hanging files, allowing front to back or side to side filing.
- Lateral file drawers are standard with file support rails, accepting letter or legal hanging files, allowing front to back or side to side filing.
- Drawers are full extension ball bearing slides.
- Lateral file drawers have interlocking safety system allowing only one drawer to be opened at a time, standard on all models.
- Box drawers and file drawers are 20" (500mm) deep.
- The floor levelers are adjustable allowing 1" height adjustment.

Hardware Colors

- Pulls and knobs are available in antique bronze finish.
- Metal pedestal legs on peninsula tables are available in black.
- Locks available in black.



Antique Bronze
Drawer Pulls



Antique Bronze
Knobs



Black Grommet



VIRGINIA
CORRECTIONAL
ENTERPRISES

Creating Quality Products and Promising Futures

Customer Contacts

Eastern Region Sales Furniture/Case

Goods Sales Only - Steven Bennett

- 804-338-0080
- Steven.Bennett@vadoc.virginia.gov

Western Region Sales Furniture/Case

Goods Sales Only

Contact Sales Manager - Robert Tilkey

- 804-241-8570
- Robert.Tilkey@vadoc.virginia.gov

Northern Region Sales Furniture/Case

Goods Only - Julia Batta

- (804) 510-3721
- Julia.Batta@vadoc.virginia.gov

Sales Manager - Robert Tilkey

- 804-241-8570
- Robert.Tilkey@vadoc.virginia.gov

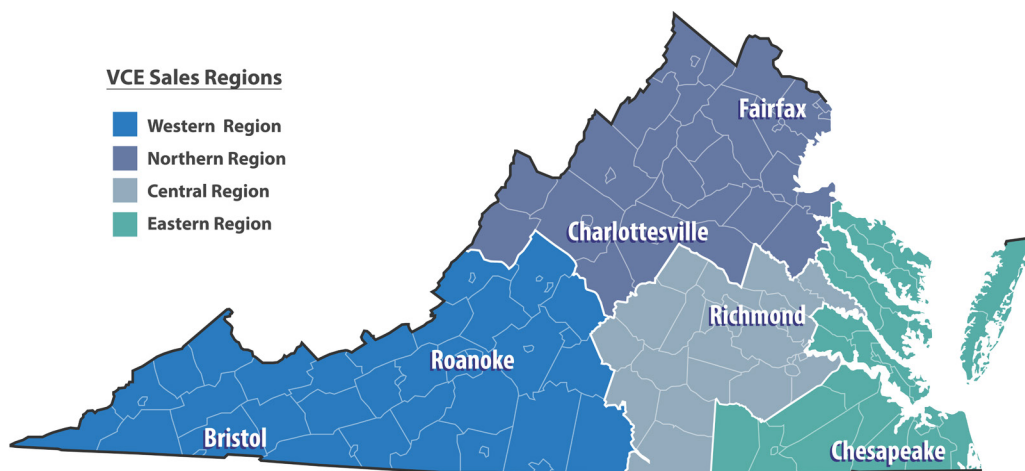
Central Region Sales Furniture/Case Goods

Sales Only - June Duvall

- 804-759-8421
- June.Duvall@vadoc.virginia.gov

Design Manager - Barbara Miner

- 804-840-5029
- Barbara.Miner@vadoc.virginia.gov



Customer Service

1-800-823-2823

vcecustsrv@vadoc.virginia.gov



Virginia
Correctional
Enterprises



8030 White Bark Terrace | North Chesterfield, VA 23237
Customer Service
(800) 823-2823
vcecustsrv@vadoc.virginia.gov

Printed by Virginia Correctional Enterprises Digital Print Facility